

CLD RGB (SV) Mod Guide

Preface

- In the guide, many of the pictures will show wires already soldered. Please follow the text instructions and ignore wires in the photos unless the guide mentions them.

1. Solder all wires to RGB(SV) board

- For the RGB, SYNC, and Audio wires, prepare approximately 10"/25 cm wire for each. Ribbon cable is suggested, but 28-30 AWG individual wires would be suitable.
- For S-Video, start with 12-14"/30-35 cm. If it is necessary in the future to open the CLD, it would help to have that slack so that de-soldering the wires isn't absolutely necessary.
- When soldering each wire to the player, trim length as needed.

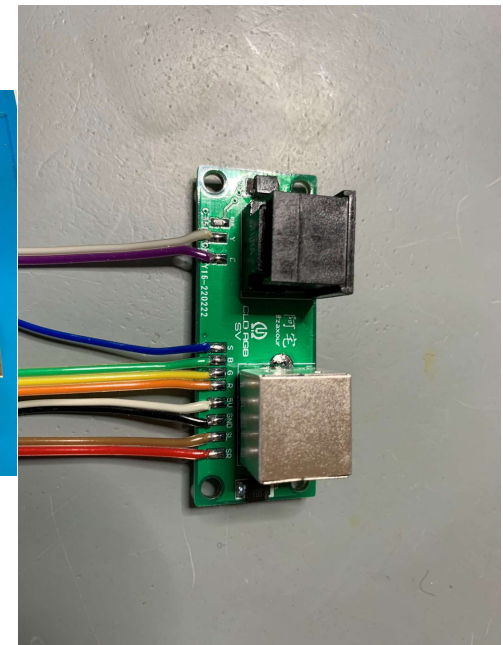
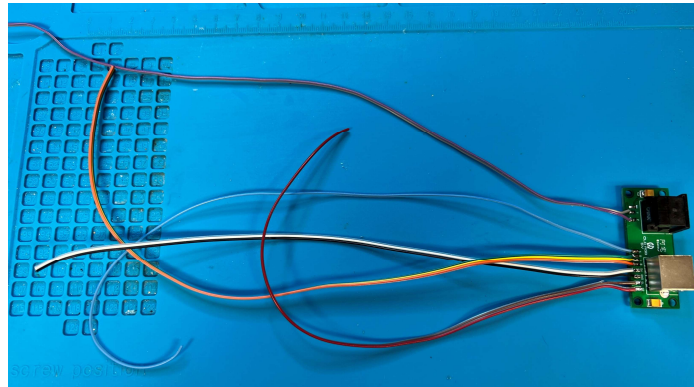


Photo: @myretrofix

2. Eject LD Tray & Remove Chassis Cover

Not necessary to remove the LD tray, just eject it so it's not contacting the rear chassis. 2-3"/ 5-7cm away from the rear chassis is sufficient.

The unit can be plugged in first, powered on and then ejected, or it can be manually ejected via the carriage motor gear under the front part of the tray



**Turn Clockwise
to eject**

3. Unscrew VIDEO board & Remove LD/CD Clamping Bracket

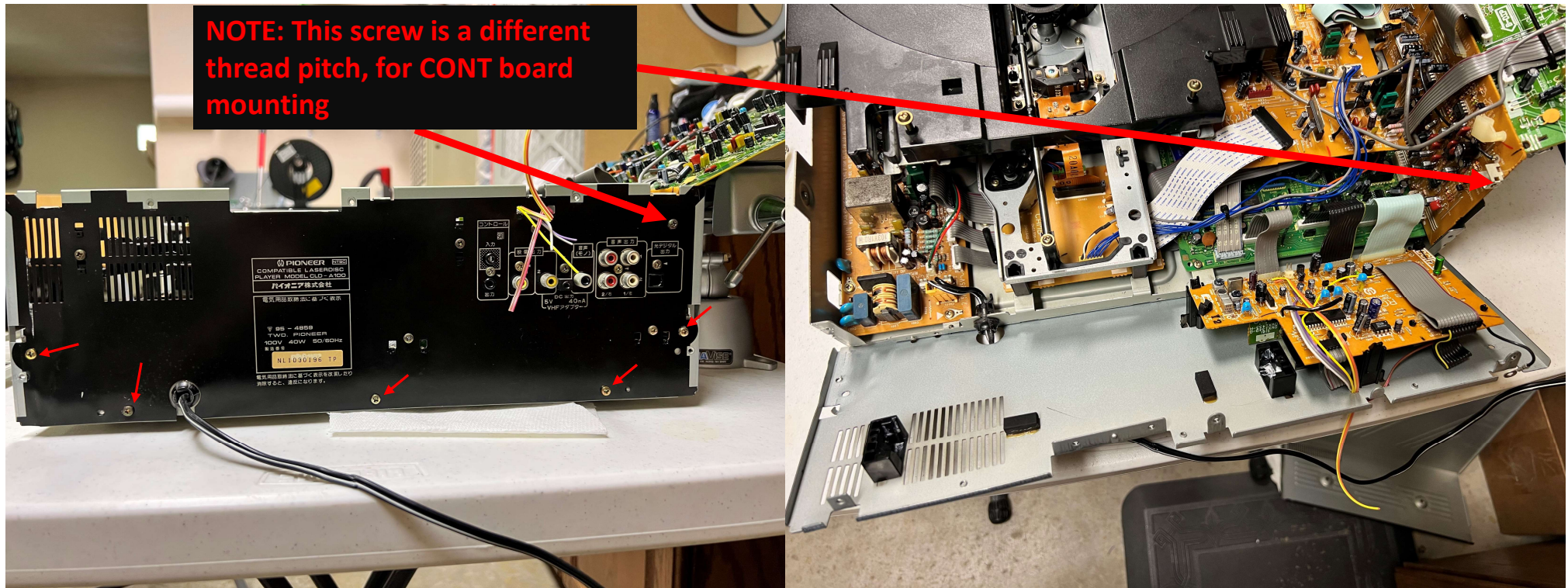
It is recommended to rest the VIDEO board as seen below. I have a panavise that I usually rest it on. Alternatively, the video board can be completely disconnected. I will not detail that here.

There is a clip on the CONT board to hold the VIDEO board, but as the rear chassis will be removed, it may not be very stable.

Note: LD Tray should be partially ejected per the previous step.

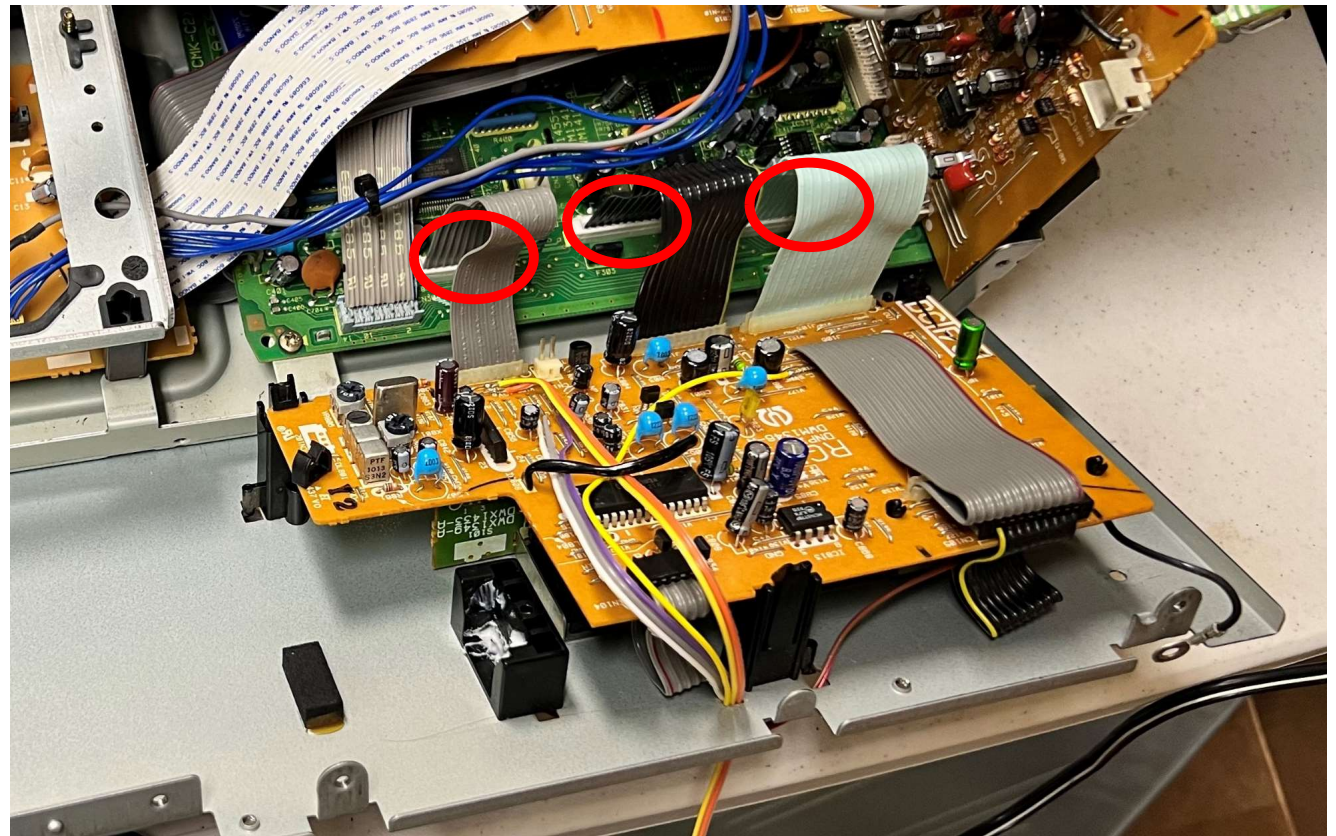


4. Unscrew Rear Chassis, Gently Fold Down

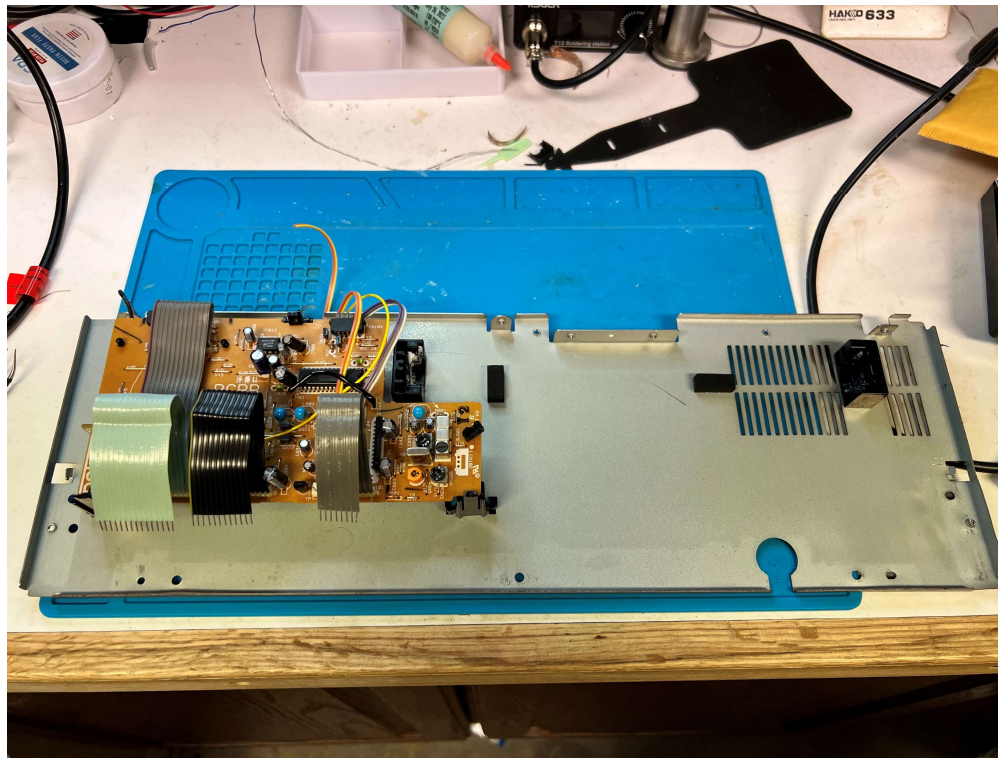


5. Gently Separate RGBB Ribbon Connectors from INTF

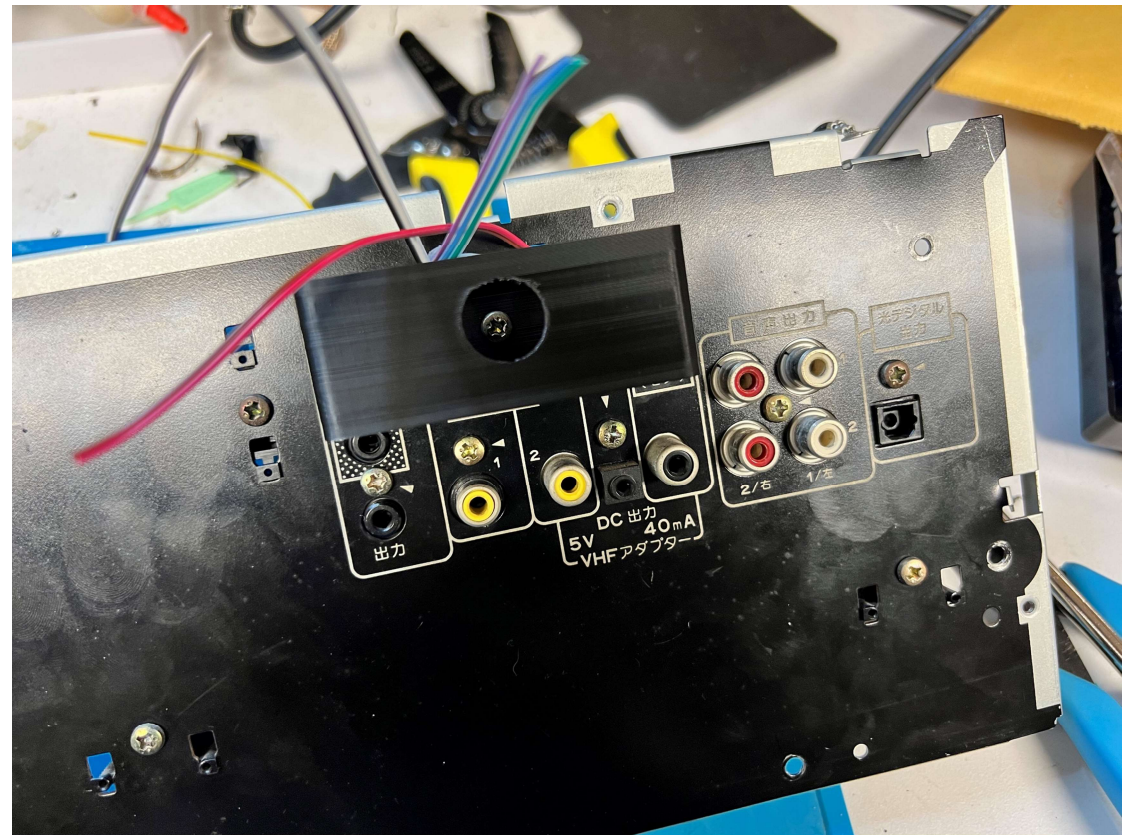
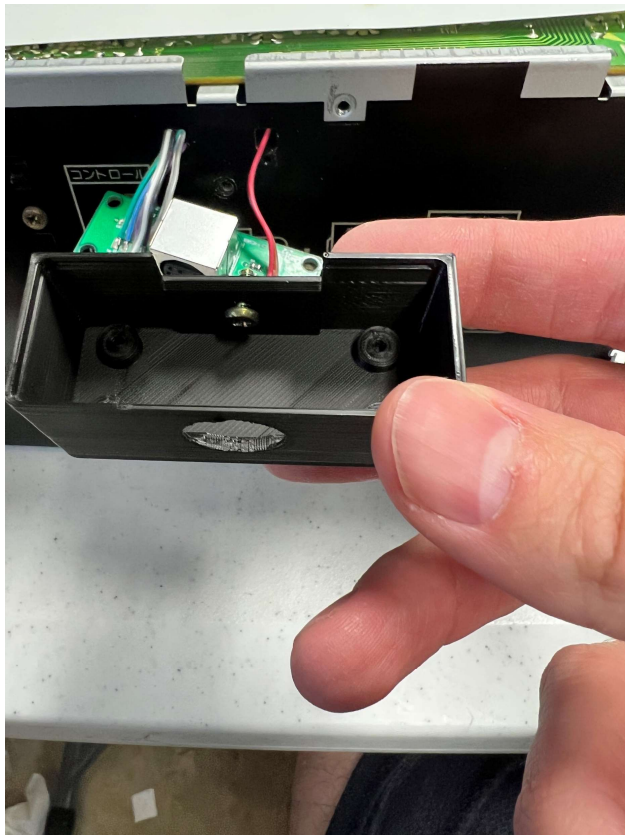
Gently lift the retaining clips on the ribbon connectors. I use a small flat head screwdriver, insert in the gap and gently rotate in either direction to disengage



6. Separate Rear Chassis from Main Chassis



7. Secure mounting box to rear chassis using the RGBB Upper Retaining Clip Screw



8. Route wires through the holes in chassis, secure mod board inside mounting box

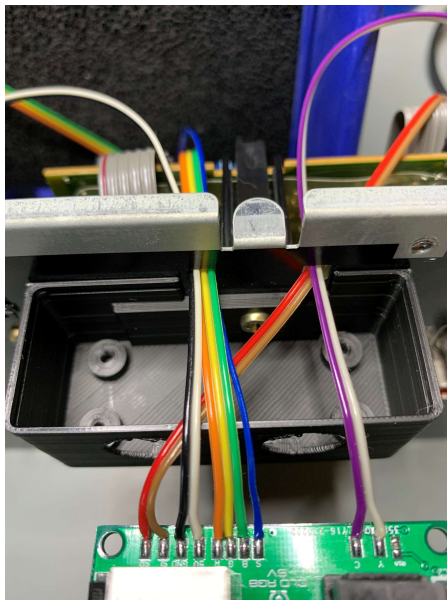
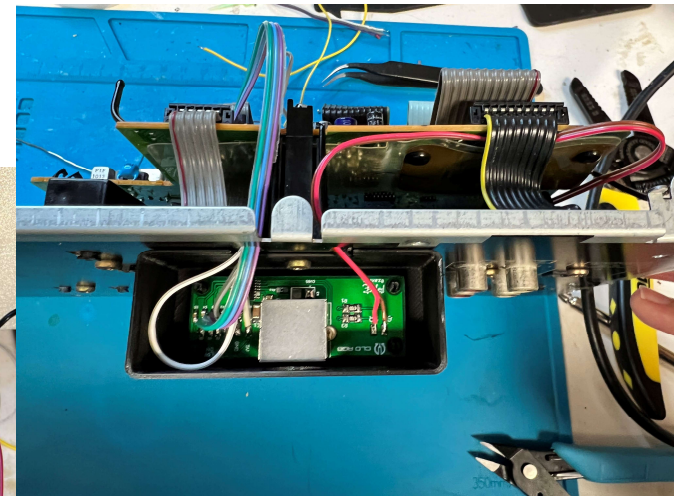
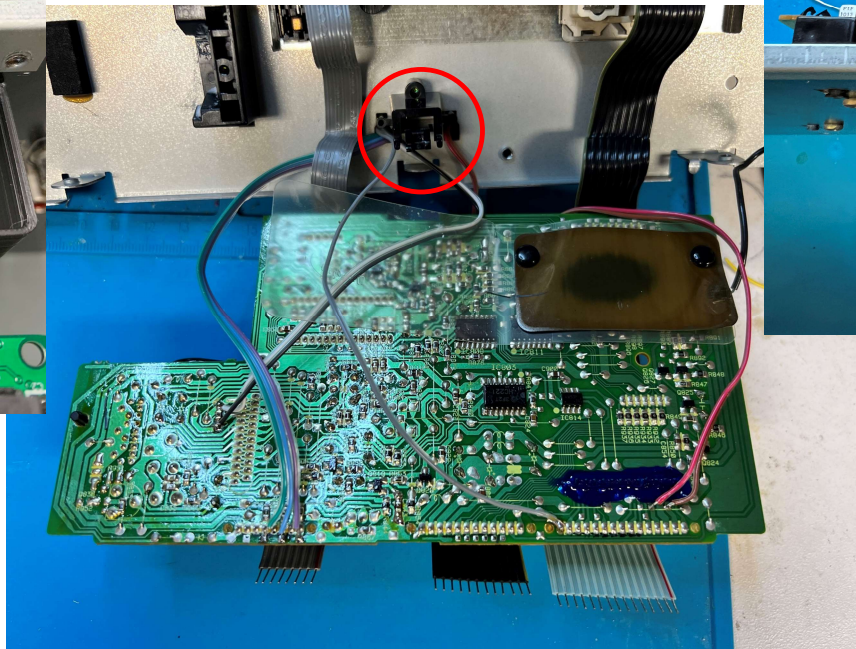


Photo: @myretrofix



9. Remove RGBB from clips and fold up

Gently lift the clip on the upper black retaining clip to release the RGBB board as shown

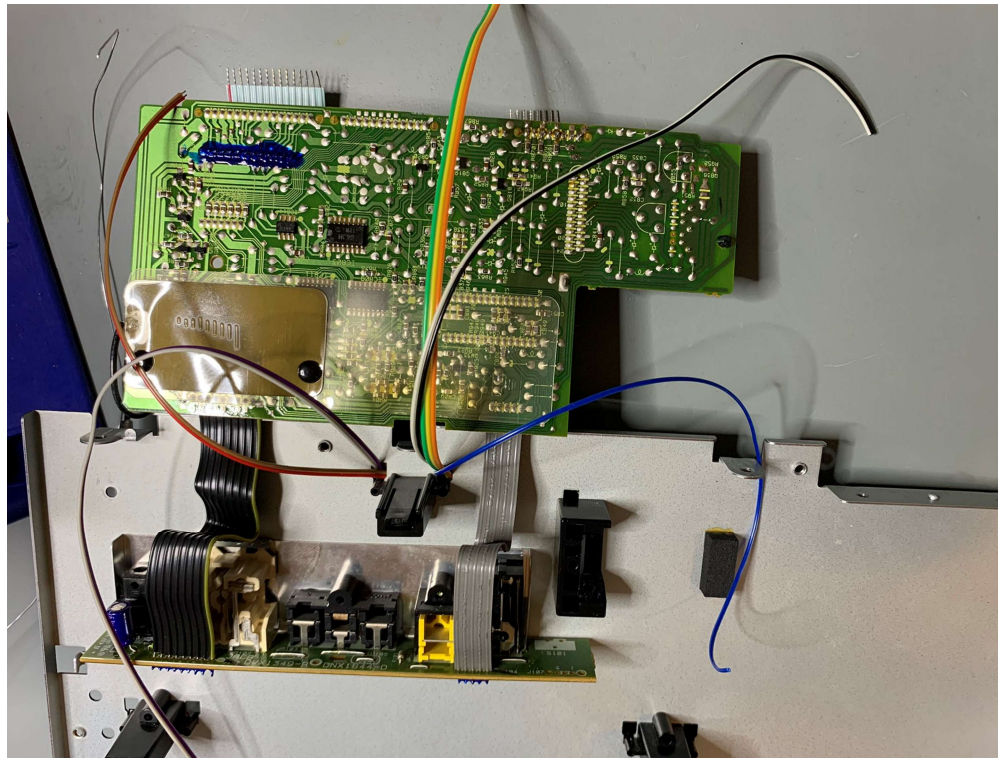
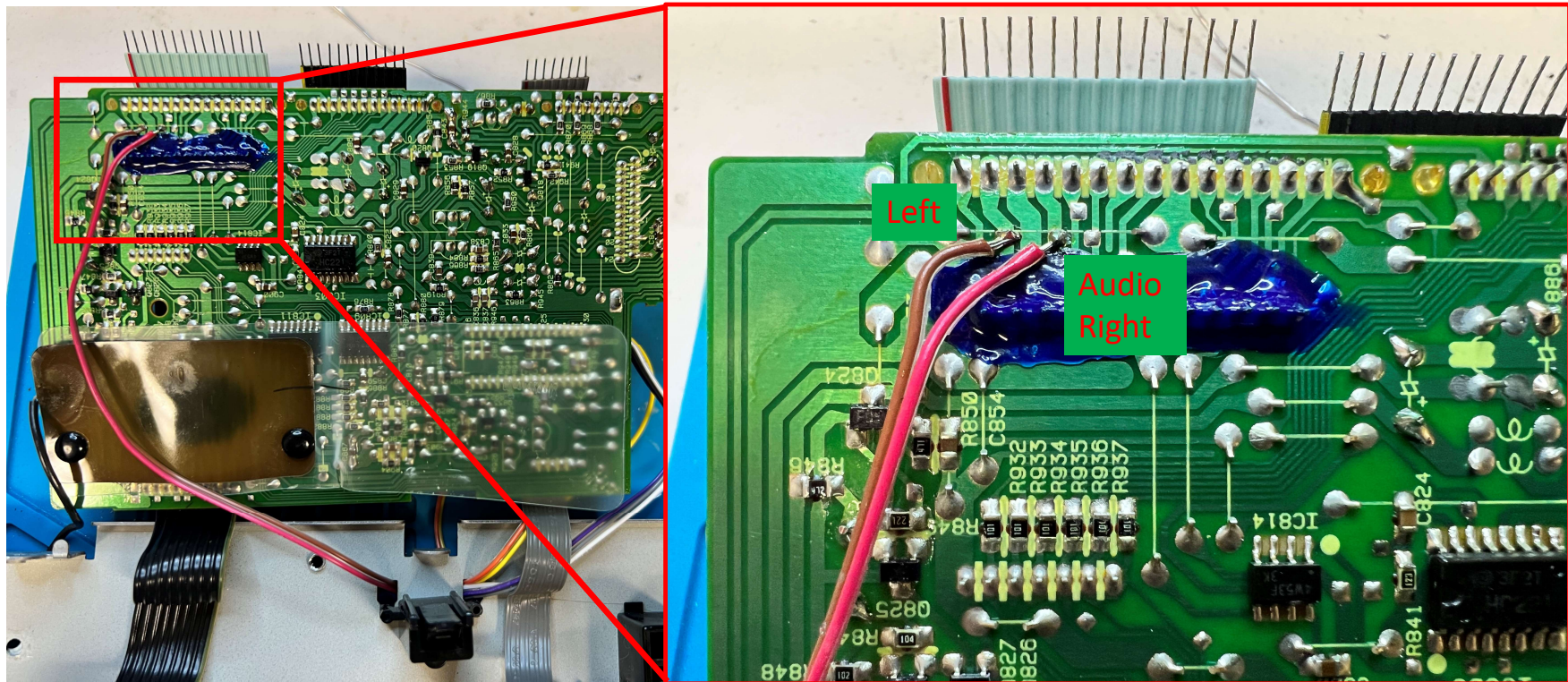
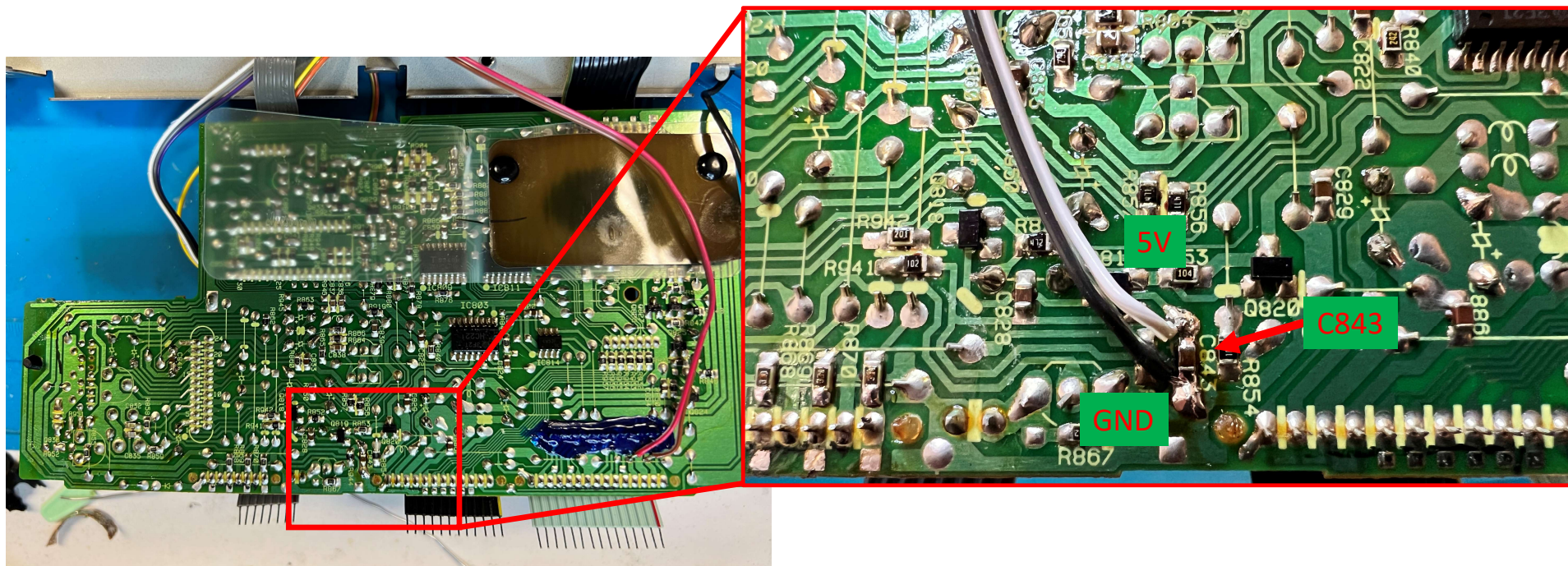


Photo: @myretrofix

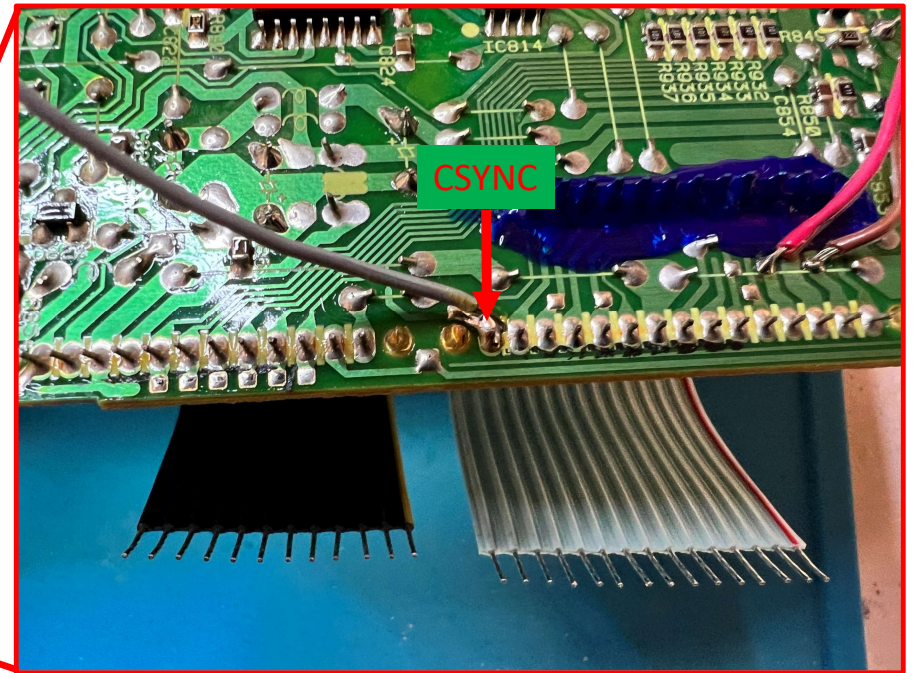
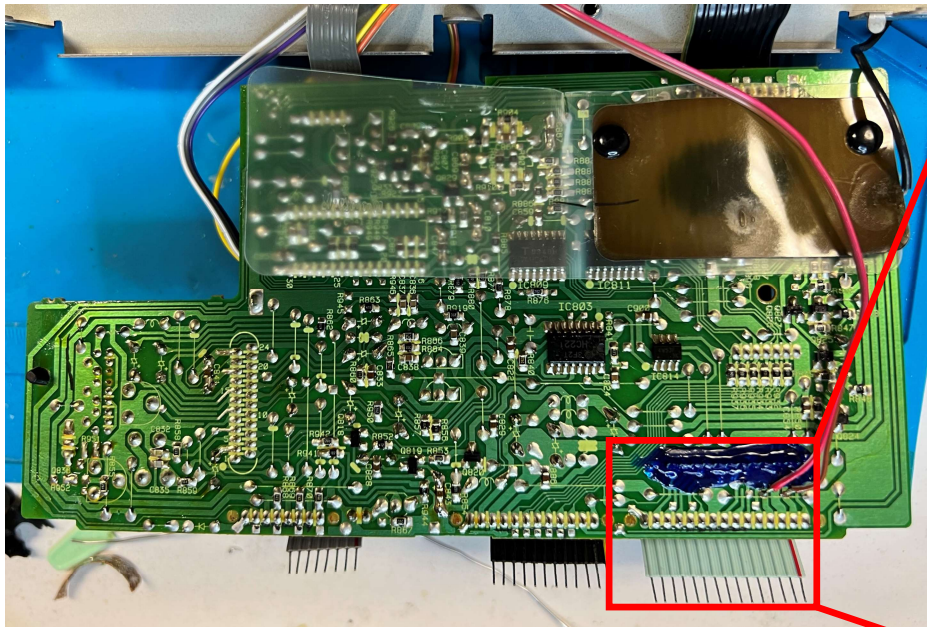
10. Solder Left/Right Audio to J103, Pins 2 and 4



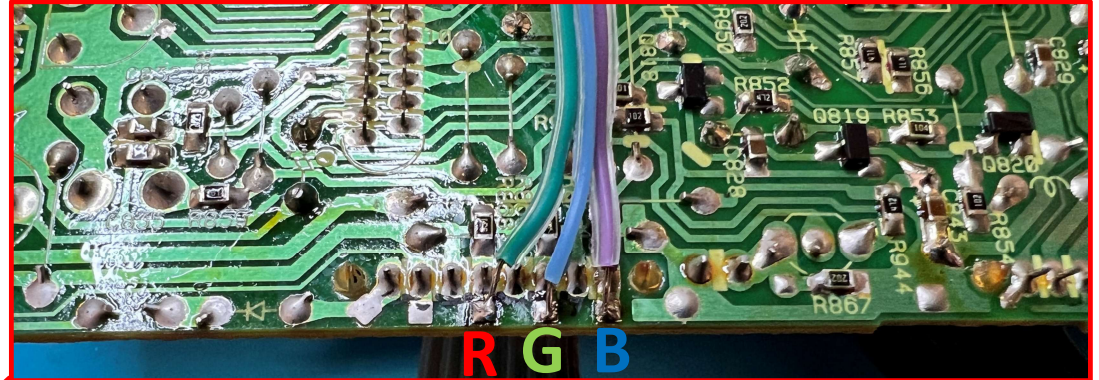
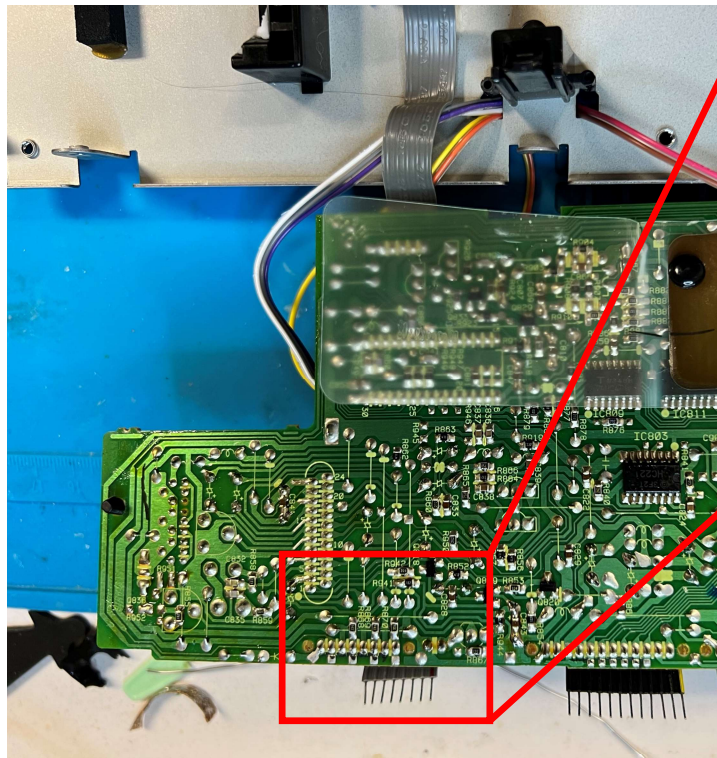
11. Solder 5V and GND across C843



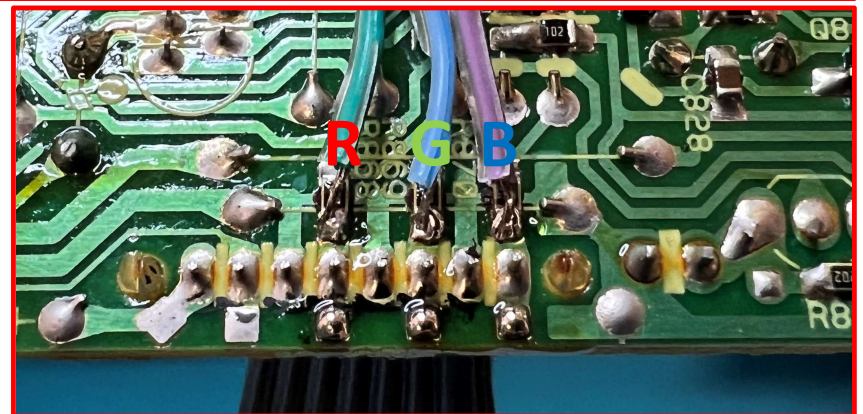
12. Solder CSYNC to J103, Pin 15



13. Solder RGB to J101, pins 5(R), 3(G), 1(B)



OR:



All Connections Soldered

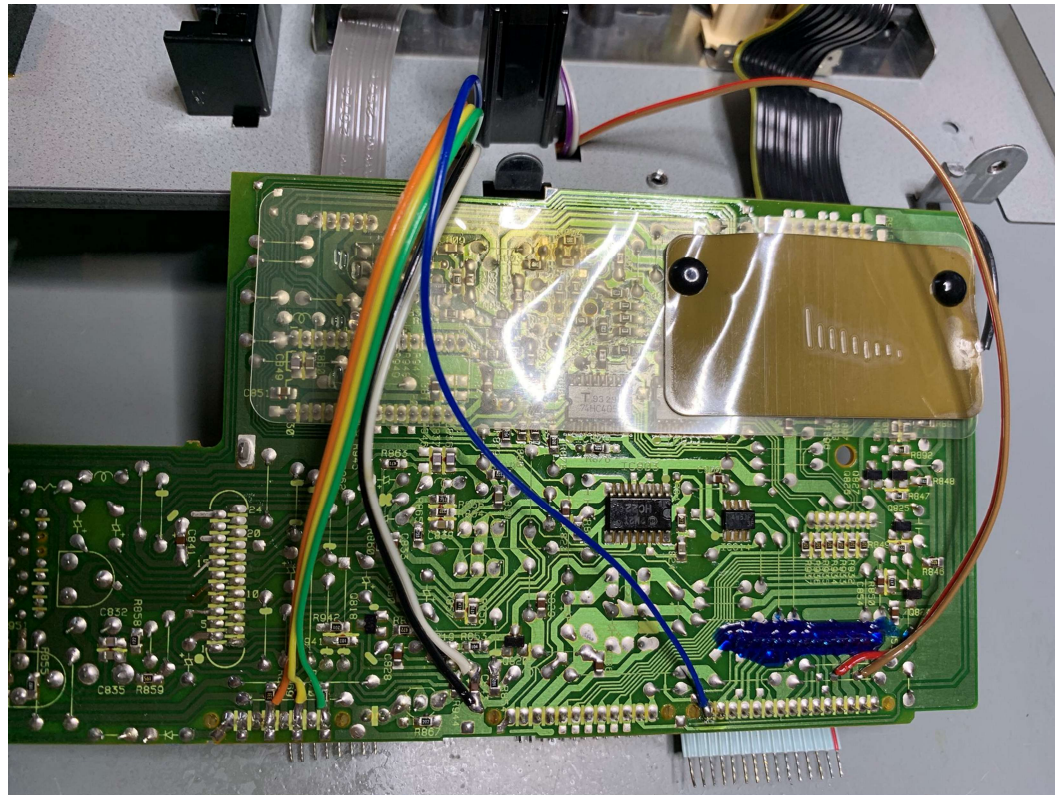
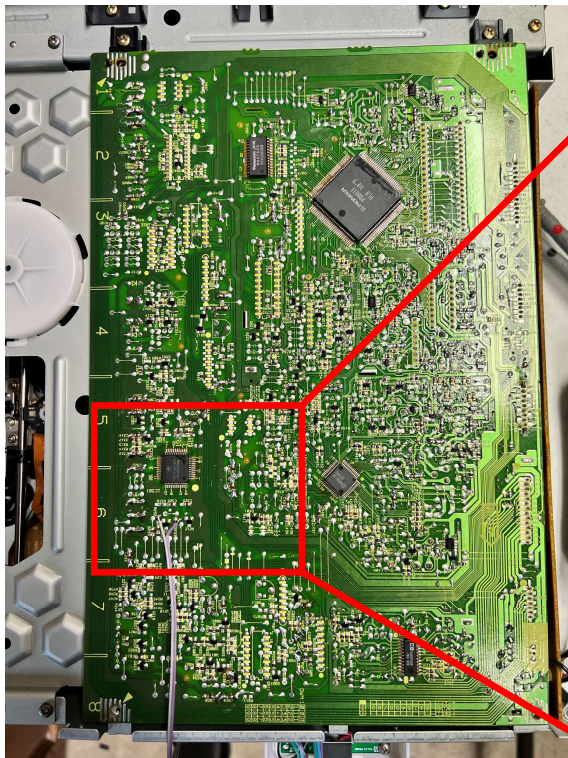


Photo: @myretrofix

14. Reassemble Player

- Reattach RGBB ribbon connectors to the INTF connectors
- Reattach and secure rear panel to the main player
- Reattach LD Clamp bracket and VIDEO board (do not secure Mylar insulating sheet at this time)

15. (S-Video) Solder Y/C Connections to VIDEO



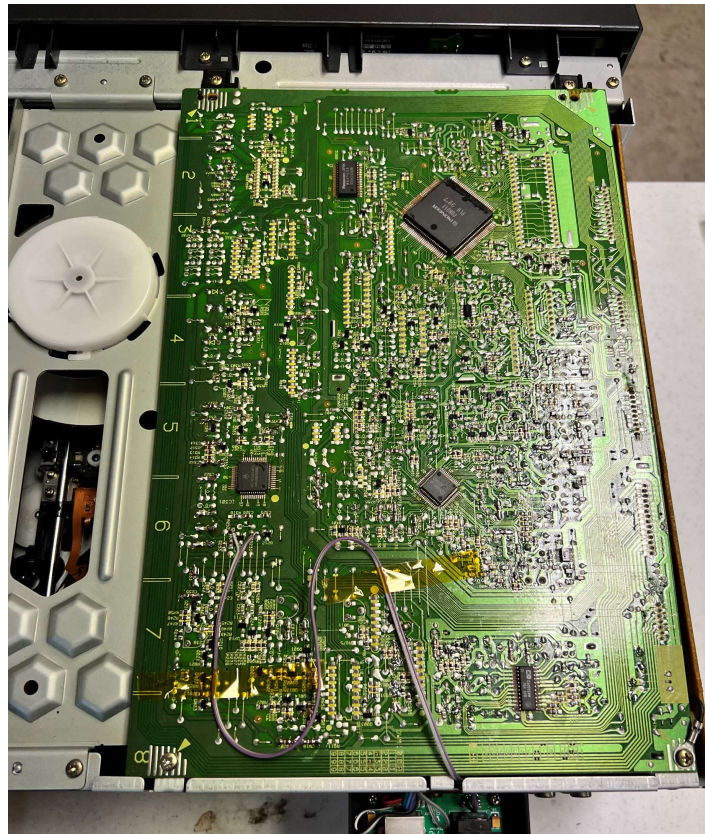
Note: C can be soldered to the jumper wire near Q212 or the upper pad of R233
Y can be soldered to the upper pad of R252 or the nearby jumper

Y

C

S-Video Wires Note

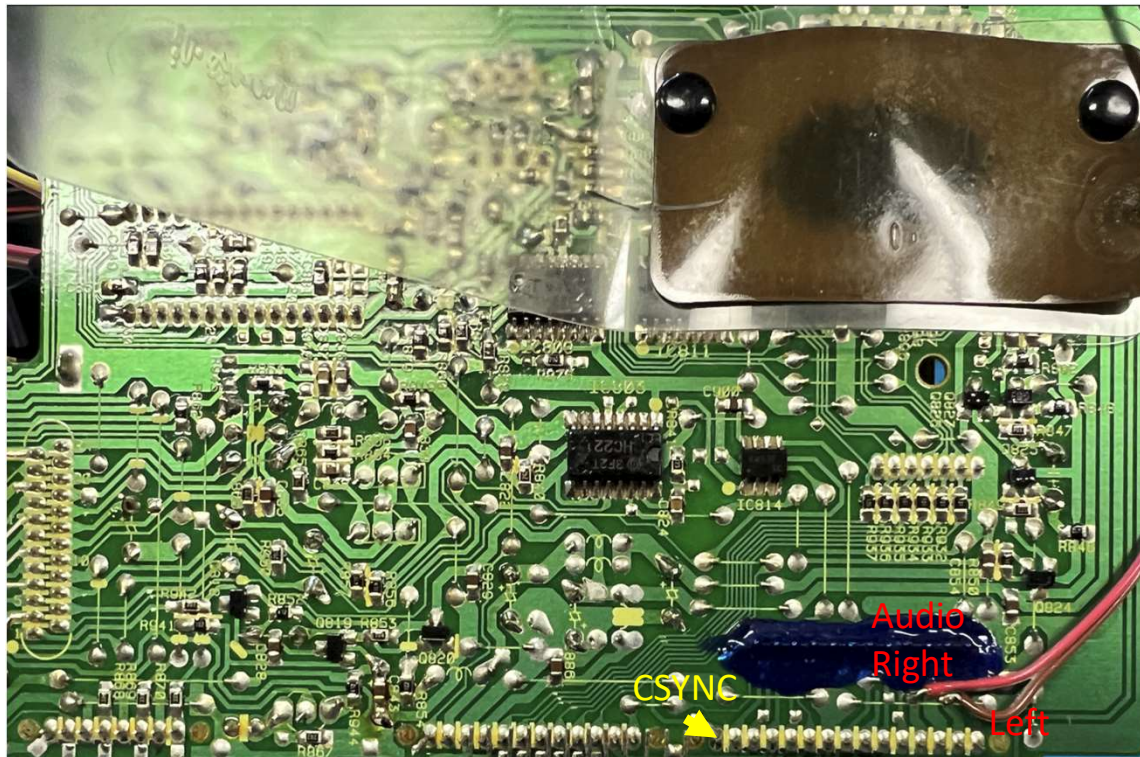
- Secure with Kapton (or similar) tape, avoid IC401, as it can get hot (thus cutout in the mylar sheet)



16. Attach snap lid to box, Secure Mylar Sheet, Finish Player Assembly



Appendix A



Appendix B - RGB Points – top-side Jumpers are after 330 ohm resistors, do not use!

